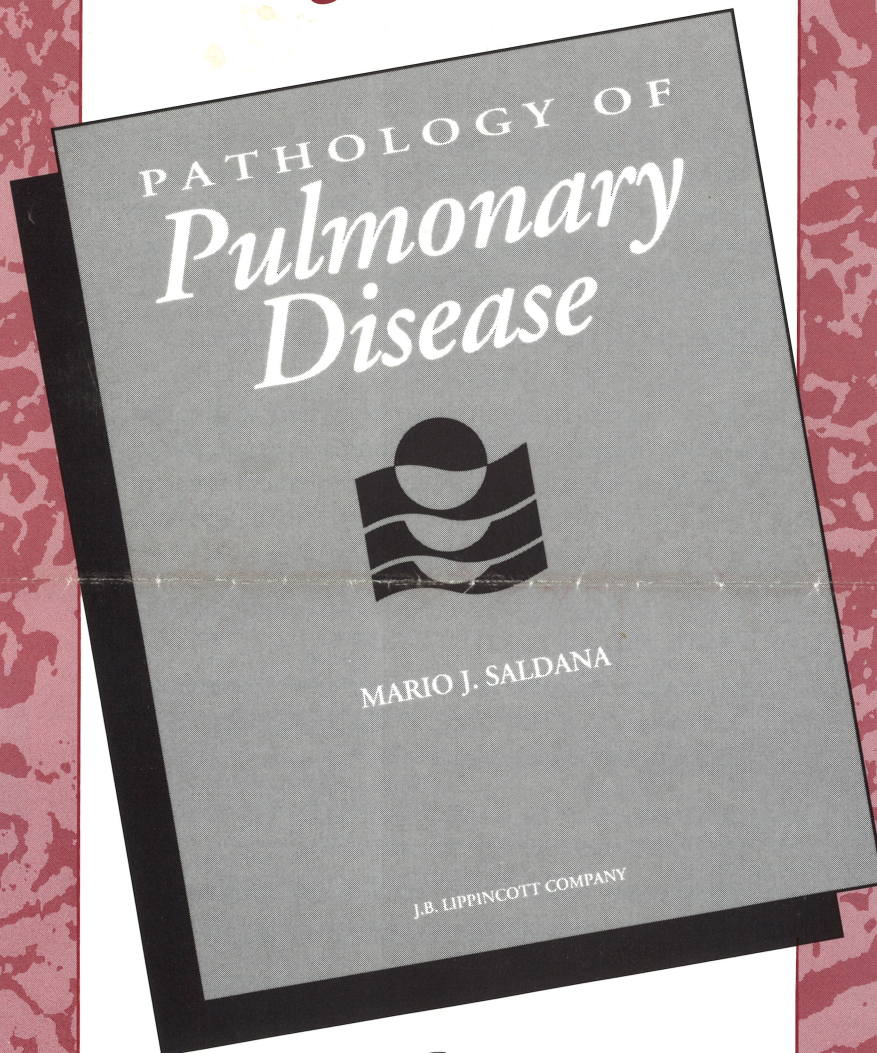


*For a limited time only --
a special book
at a special advance price!*

SEE THE
Quality.

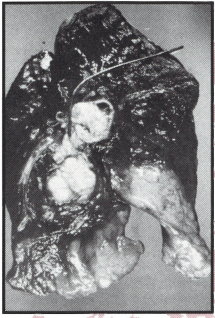
RECOGNIZE THE
Authority.

APPRECIATE THE
Usefulness.



Lippincott
A Wolters Kluwer Company

PATHOLOGY OF *Pulmonary Disease*



In a left pneumonectomy specimen from a patient with papillary squamous cell carcinoma of the major bronchi, there is marked distention of the bronchi by a tumor that focally invaded through the wall of the left upper lobe bronchus.

A comprehensive reference that's your authoritative guide to a difficult subject! **Pathology of Pulmonary Disease** represents a holistic approach to pulmonary disease, how it affects the patient, and how it can be recognized and defined by pathologic means. Correlating clinical, radiologic, and functional concepts to pathologic findings, this outstanding text features:

- *contributions from internationally-known authorities*
- *helpful, logical organization classifying pulmonary diseases according to their most important and characteristic features*
- *a solid integration of functional aspects, etiology, morphology, and pathogenesis of pulmonary disease*
- *and over 1,500 superb illustrations, including nearly 200 in full color.*

A WEALTH OF TOPICS COVERED FROM THE EXPERTS' POINT OF VIEW

Edited by Dr. Mario J. Saldana, a leading authority in the field, **Pathology of Pulmonary Disease** presents a broad scope of topics covered in 77 chapters for easy reference. Review the Table of Contents... and note the distinguished contributors.

COVER-TO-COVER ILLUSTRATIONS OF SUPERB QUALITY

We've reproduced a few illustrations here to give you an idea of their exceptional clarity and detail. But to fully appreciate how well they complement the text and enhance your understanding, see them first-hand in the pages of this book!

ORDER YOUR COPY TODAY AT THIS SPECIAL INTRODUCTORY PRICE!

Approximately 1,000 Pages. About 1,500 Illustrations, including 192 in Full Color. Available December 1993. (ISBN-0-397-51257-0) \$245.00. *

ORDER WITH CONFIDENCE IN OUR MONEY-BACK GUARANTEE.

If you're not entirely satisfied with any book you order, just return within 30 days for a full refund.

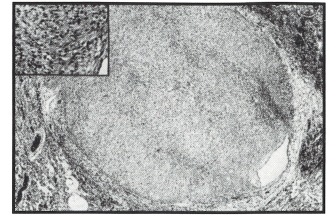
About the Editor

MARIO J. SALDANA, M.D.

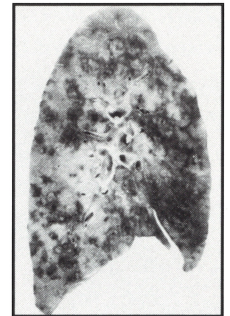
Professor of Pathology, University of Miami School of Medicine

Attending Pathologist, Jackson Memorial Hospital, Miami,

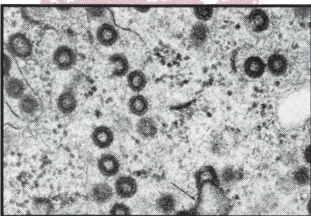
Florida



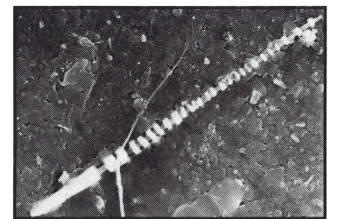
A peculiar smooth muscle proliferation arose in the wall of a pulmonary vein in a child with human immunodeficiency virus infection. (H&E stain; low magnification.) The spindle cell proliferation is characteristic of the tumor (*inset*). (H&E stain; low magnification.)



Massive involvement of pulmonary tissue in a middle-aged patient with acquired immunodeficiency syndrome and Kaposi sarcoma.



Micrograph of an open lung biopsy specimen fixed in glutaraldehyde shows virions of Epstein-Barr virus.



Scanning electron micrograph of a ferruginous body (*arrows*) isolated from the lung of a worker in the refractory ceramic fiber industry. The central core fiber was composed of aluminum and silicon.

TABLE OF CONTENTS

SECTION I THE NORMAL LUNG

- 1- THE ADULT LUNG: STRUCTURE AND FUNCTION
Jacqueline J. Coalson
- 2- DEVELOPMENT, GROWTH, AND AGING OF THE LUNG
Daphne E. deMello and Lynne M. Reid

SECTION II PATHOLOGIC DIAGNOSIS OF PULMONARY DISEASE

- 3- CYTOLOGIC EXAMINATION AND FINE NEEDLE ASPIRATION
Carlos W. Bedrossian and Rosa M. Davila
- 4- BIOPSY EXAMINATION
Alberto M. Marchevsky
- 5- STUDY OF RESECTED AND POST-MORTEM LUNG SPECIMENS
Mario J. Saldana

SECTION III PEDIATRIC LUNG PATHOLOGY AND METABOLIC DISORDERS OF THE LUNG

- 6- CONGENITAL MALFORMATIONS OF THE LARYNX AND TRACHEA
Benjamin H. Landing
- 7- CONGENITAL MALFORMATIONS OF BRONCHI AND LUNG
Benjamin H. Landing
- 8- EMPHYSEMATOUS AND CYSTIC LESIONS
Benjamin H. Landing
- 9- GENETIC AND SELECTED NON-GENETIC DISORDERS
OF THE RESPIRATORY TRACT
Benjamin H. Landing
- 10- VASCULAR LESIONS OF THE RESPIRATORY TRACT AND
DISORDERS OF THE CHEST WALL AND DIAPHRAGM
Benjamin H. Landing
- 11- PULMONARY DISEASE IN THE PEDIATRIC-AGE GROUP
Miguel Reyes-Mugica and F. Gonzalez-Crussi
- 12- PULMONARY INVOLVEMENT IN SOME INBORN ERRORS
OF METABOLISM
Masazumi Adachi

SECTION IV PATHOLOGY OF ACUTE RESPIRATORY FAILURE

- 13- CARDIOGENIC PULMONARY EDEMA
Colin M. Bloor
- 14- NON-CARDIOGENIC PULMONARY EDEMA AND
DIFFUSE ALVEOLAR DAMAGE
Joseph F. Tomashefski, Jr.
- 15- IATROGENIC DIFFUSE ALVEOLAR DAMAGE:
OXYGEN-TOXICITY AND RADIATION-INDUCED INJURY
Joseph F. Tomashefski, Jr.
- 16- DRUG-INDUCED PULMONARY DISEASE
Charles M. Lombard
- 17- INHALATION INJURY TO THE RESPIRATORY TRACT
Joanne L. Wright and Mario J. Saldana
- 18- ACUTE PULMONARY THROMBO-EMBOLISM AND OTHER
FORMS OF PULMONARY EMBOLIZATION
Colin M. Bloor
- 19- ACUTE PULMONARY DEATH AND FORENSIC PATHOLOGY
OF THE LUNG
Joseph H. Davis and Mario J. Saldana

SECTION V PATHOLOGY OF THE PULMONARY CIRCULATION

- 20- PULMONARY HYPERTENSION CAUSED BY CHRONIC LEFT
HEART FAILURE, OBSTRUCTION OF PULMONARY VENOUS
RETURN, AND PARENCHYMAL LUNG DISEASE
Andrew Farb, Allen P. Burke, and Renu Virmani
- 21- PULMONARY HYPERTENSION IN CONGENITAL HEART DISEASE
Ricardo Druet
- 22- THROMBO-EMBOLIC PULMONARY HYPERTENSION,
INTRAVENOUS DRUG-ADDICTION, AND RARE FORMS OF
PULMONARY EMBOLIZATION
Renu Virmani, Andrew Farb, Allen P. Burke, and Edwina J. Popek
- 23- PRIMARY PULMONARY HYPERTENSION AND
VENO-OCCLUSIVE DISEASE
Allen P. Burke, Renu Virmani, and Andrew Farb

24- PULMONARY HYPERTENSION AND PATHOLOGY AT HIGH ALTITUDES

Mario J. Saldana and Javier Arias-Stella

25- PATHOLOGY OF THE PULMONARY CIRCULATION BEFORE AND AFTER CORRECTION OF LOW-FLOW STATES

Ramiab Subramanian and Renu Virmani

SECTION VI CHRONIC OBSTRUCTIVE PULMONARY DISEASE

- 26- EMPHYSEMA
Richard E. Sobonya
- 27- CHRONIC BRONCHITIS
Daphne E. deMello and Lynne M. Reid
- 28- BRONCHIECTASIS
Daphne E. deMello and Lynne M. Reid
- 29- BRONCHIAL ASTHMA
Philip C. Pratt
- 30- SMALL AIRWAYS DISEASE
Samuel A. Yousem

SECTION VII RESTRICTIVE (INTERSTITIAL) LUNG DISEASE

- 31- NON-SPECIFIC ("USUAL") INTERSTITIAL PNEUMONIA,
INTERSTITIAL FIBROSIS, AND THE "HONEYCOMB" LUNG
Philip T. Cagle
- 32- CHRONIC INTERSTITIAL PNEUMONIA WITH SPECIFIC
HISTOLOGIC FEATURES
Philip T. Cagle
- 33- MIXED INTERSTITIAL AND INTRA-ALVEOLAR PROCESSES
Victor L. Roggli and Marcus S. Fisher, Jr.
- 34- THE PNEUMOCONIOSIS: COAL-WORKER'S PNEUMOCONIOSIS
Richard L. Naeye
- 35- THE PNEUMOCONIOSIS: SILICOSIS AND SILICATOSIS
John J. Godleski
- 36- THE PNEUMOCONIOSIS: ASBESTOSIS
Victor L. Roggli
- 37- RARE PNEUMOCONIOSIS ("METALLOCONIOSIS")
Victor L. Roggli

SECTION VIII PULMONARY INFECTIONS

- 38- USUAL PNEUMONIAS DUE TO GRAM-POSITIVE AND
GRAM-NEGATIVE BACTERIA
Adolfo Firpo-Betancourt and Cesar A. Moran
- 39- ANAEROBIC AND UNUSUAL BACTERIAL PNEUMONIAS
Aileen M. Marty, Ronald C. Neafie, and Lloyd L. Smrkowski
- 40- ACTINOMYCOSIS, NOCARDIOSIS AND BOTRYOMYCOSIS
Aileen M. Marty
- 41- TUBERCULOSIS AND ATYPICAL MYCOBACTERIAL INFECTIONS
Joseph F. Tomashefski, Jr.
- 42- VIRAL, CHLAMYDIAL, AND RICKETTSIAL INFECTIONS
Anthony A. Gal and Steven M. Gordon
- 43- FUNGAL DISEASES
Aileen M. Marty and Ronald C. Neafie
- 44- PROTOZOAL AND HELMINTHIC DISEASES
Aileen M. Marty and Ronald C. Neafie
- 45- PULMONARY PATHOLOGY IN THE ACQUIRED
IMMUNODEFICIENCY SYNDROME
Peter Angritt and Joan M. Mones

SECTION IX TUMORS AND TUMOR-LIKE LESIONS OF THE LUNG AND PLEURA

- 46- CLASSIFICATION, STAGING, AND ETIOLOGY
OF LUNG CANCER
Mario J. Saldana, Kasi S. Sridhar, and Richard J. Thurer
- 47- ADENOCARCINOMA
Mario J. Saldana and Joan M. Mones
- 48- SQUAMOUS CELL CARCINOMA
Mario J. Saldana and Joan M. Mones
- 49- SMALL CELL CARCINOMA
Michael James Gaffey and Stacey E. Mills

50- LARGE CELL CARCINOMA

Bruce Mackay

51- CARCINOID AND OTHER NEUROENDOCRINE TUMORS

William D. Travis

52- BRONCHIAL GLAND TUMORS

Alberto M. Marchevsky

53- PAPILLARY TUMORS OF SURFACE EPITHELIUM

Mario J. Saldana and Joan M. Mones

54- MIXED EPITHELIAL-MESENCHYMAL TUMORS

Michael N. Koss, C.A. Moran, J.T. Stocker

55- LYMPHOMAS AND OTHER LYMPHOPROLIFERATIVE LESIONS

Gordon N. Gebhardt and Raymond R. Tubbs

56- MESENCHYMAL TUMORS

Cesar A. Moran

57- MALIGNANT MESOTHELIOMA AND OTHER PLEURAL TUMORS

Carlos Bedrossian

58- MISCELLANEOUS TUMORS OF THE LUNG

Nicholas J. Hruby, Michael James Gaffey, and Stacey E. Mills

59- METASTATIC LUNG CANCER

Saul Suster

60- PULMONARY METASTASES OF EXTRAPULMONARY TUMORS

Saul Suster

61- TUMOR-LIKE LESIONS OF THE LUNG AND PLEURA

Osamu Matsubara and Eugene J. Mark

SECTION X IMMUNOLOGIC LUNG DISEASE

62- GOODPASTURE SYNDROME AND THE DIFFUSE ALVEOLAR HEMORRHAGE SYNDROME

Stephen M. Bonsib

63- ALLERGIC BRONCHO-PULMONARY ASPERGILLOSIS, MUCOID IMPACTION OF BRONCHI, AND BRONCHOCENTRIC GRANULOMATOSIS

Michael N. Koss and William D. Travis

64- EOSINOPHILIC PNEUMONIA

Charles M. Lombard

65- HYPERSENSITIVITY PNEUMONITIS

Roberto Barrios

66- SARCOIDOSIS AND OTHER NON-INFECTIOUS GRANULOMATOUS PROCESSES

Yale Rosen

67- PULMONARY INVOLVEMENT IN COLLAGEN-VASCULAR DISORDERS

J.T. Lie

68- PULMONARY ANGIITIS AND GRANULOMATOSIS: WEGENER GRANULOMATOSIS

Charles M. Lombard

69- PULMONARY ANGIITIS AND GRANULOMATOSIS: NECROTIZING SARCOID GRANULOMATOSIS AND CHURG-STRAUSS SYNDROME

William D. Travis and Michael N. Koss

70- PULMONARY INVOLVEMENT IN SYSTEMIC VASCULITIDES

J.T. Lie

71- TRANSPLANTATION PATHOLOGY OF THE LUNG

Samuel A. Yousem

SECTION XI MISCELLANEOUS TOPICS

72- PATHOLOGY OF THE UPPER AIRWAYS

Louis H. Weiland

73- PATHOLOGY OF THE TRACHEA AND MAIN BRONCHI

Mario J. Saldana

74- PATHOLOGY OF THE MEDIASTINUM

Saul Suster and Cesar A. Moran

75- PATHOLOGY OF THE PLEURA

Stephen M. Bonsib and J. Carlos Manivel

76- PATHOLOGY OF THE CHEST WALL AND DIAPHRAGM

J. Carlos Manivel

77- ENVIRONMENTAL AND OCCUPATIONAL ASPECTS OF PUL- MONARY DISEASE

John E. Craighead

MORE PATHOLOGY TITLES YOU'LL WANT TO SEE!

New Edition!

Gompel and Silverberg / With 7 Contributors
PATHOLOGY IN GYNECOLOGY AND OBSTETRICS,
FOURTH EDITION

This new edition of a well-known reference has been designed for ease of reference, with a new chapter on molecular biologic techniques; new sections on specimen handling in each organ chapter; more coverage of differential diagnosis; addition of cytologic screening in cervix chapter; comparisons of different Pap smear techniques; 80 *new* color illustrations.

704 Pages. 570 Illustrations, 120 in Color.

Available December 1993. (ISBN-0-397-51226-0)

New Edition!

Ioachim
LYMPH NODE PATHOLOGY, SECOND EDITION

This concise, practical guide to the interpretation of findings on lymph node biopsy is known for its "checklist" displays showing key points for easy reference and comparison. The new second edition has been entirely rewritten for a clear, unified, up-to-date approach. Includes much new material, with over 20 new chapters; many new color illustrations; significant material on AIDS and monoclonal antibodies.

720 Pages. 500 Illustrations, Approx. 256 in Color.

Available October 1993. (ISBN-0-397-50807-7)

New Edition!

Tisber and Brenner / With 82 Contributors
RENAL PATHOLOGY with Clinical and Functional
Correlations, Second Edition/In Two Volumes

Edited by specialists in renal medicine and pathology, and distinguished by an emphasis on correlating pathology to clinical findings. Helps you analyze renal biopsy specimens and define and categorize renal structural injury at its earliest stages. New in the second edition: new chapters on AIDS, renal tuberculosis, immunoactoid glomerulopathy, and malignancies and secondary development.

Approx. 1,850 Pages. About 1,000 Illustrations, 24 in Color.

Available December 1993. (ISBN-0-397-51240-6)



Lippincott

A Wolters Kluwer Company
227 East Washington Square
Philadelphia, PA 19106-3780

Koss / With 11 Contributors

DIAGNOSTIC CYTOLOGY AND ITS HISTOPATHOLOGIC
BASES, FOURTH EDITION/In Two Volumes

A thoroughly revised edition of a "citation classic" -- acclaimed as one of the most frequently cited and influential works in its field, according to *Current Contents*. New to this edition: chapters on structure and ultrastructure of cells; current state of molecular biology and its application to diagnostic cytology; cell response to injury; cytology of cancer; AIDS; flow cytometry.

1,824 Pages. 1,453 Illustrations. 15 Color Plates. 1992.

(ISBN-0-397-51049-7)

Marcove and Arlen

ATLAS OF BONE PATHOLOGY
With Clinical and Radiographic Correlations

Nearly 2,000 illustrations provide extensive visual coverage of joint disorders. Illustrations are selected from Dr. Henry Jaffe's classic collection, and the text encompasses his course notes. Normal osseous development is demonstrated, then contrasted with hereditary, developmental, and metabolic disorders. Studies the effects of arthritis and infectious diseases; tumors are illustrated with some of the best specimen photos available.

640 Pages. 1,927 Illustrations. 1992.

(ISBN-0-397-51077-2)

Wick, Editor-in-Chief

AMERICAN JOURNAL OF CLINICAL PATHOLOGY

The most highly regarded scientific journal in its field, The American Journal of Clinical Pathology publishes the latest reports on original studies and observations in clinical and anatomic pathology. Its reader-friendly format is designed for easy access to pertinent information. Peer-reviewed articles cover a broad range of subspecialty topics, with papers on basic scientific investigations and their clinical implications, case studies, and special reports. Includes the bi-annual supplement *Pathology Patterns*, which provides the latest commentary on the environment of laboratory medicine.

Published Monthly. (PLL)

Monthly Installment Plan not available for journals.

**IMPORTANT: IF YOU ARE USING A PURCHASE ORDER,
PLEASE ATTACH THE ORDER CARD.**

* *Introductory offer available through 12/31/93.*

To order: Call 1-301-714-2300 or Fax: 1-301-824-7390.

MONEY-BACK GUARANTEE!

Return in 30 days for a full refund if you're not satisfied.